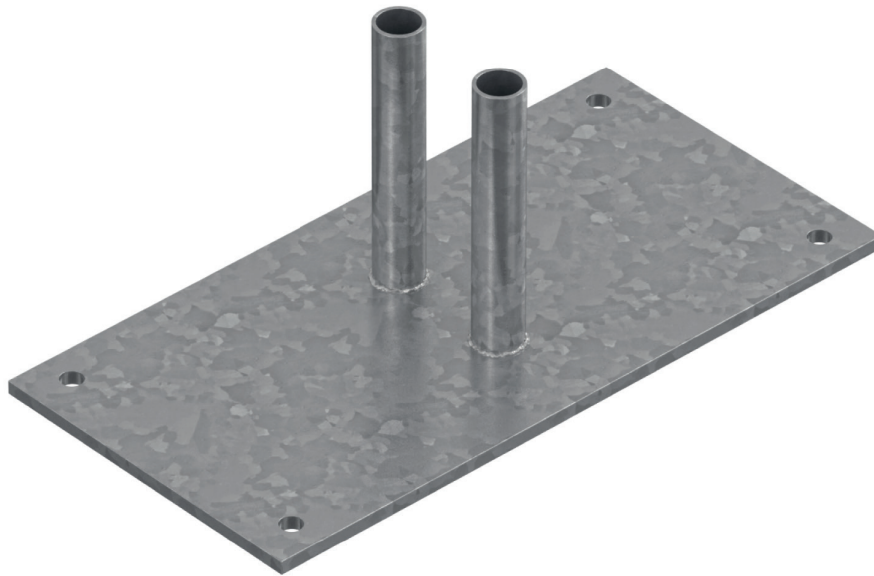


Steel footing flat



Specifications

Article Nr.	D0302
Dimension	1.6' W x 0.7' H x 0.82' D
Weight	24 lb
Package quantity	1

**Prevents people
tripping
Ideal on paved surfaces**

Certainty in the building process

When used on asphalt or when there is a risk of people tripping, the steel base plate is a perfect alternative to blocks. The base plate has two upward pipes onto which you slide the uprights of the fences. The plate has holes that allow the use of cotter bolts.

Everything for complete building site protection. Such as blocks and struts for stability, the revolutionary High Security coupler for better security or the customised stands for easy transport. Or how about using your fence as a promotional tool? Our Heras' philosophy does not stop at mere fences...

Disclaimer. There are no rights to be derived from the technical specification. You should always consider up to 10% tolerance deviations. Heras herewith complies with NEN-EN 10305-3 © Heras.